



**Earth Science Systems**  
ESSENTIAL UNDERGROUND INFORMATION

## GPR Concrete Scanner

**Fast – Accurate – Reliable – Ground Penetrating Radar**

Detects rebar, conduits, post-tension cables, metal and plastic pipes, power lines, utilities with precision and clarity. Finds defects such as voids and honeycombing.



The GPR Concrete Scanner delivers cutting-edge ground penetrating radar (GPR) technology in a compact, rugged system built for demanding work conditions. The lightweight scanner is ideal for fast on-site assessments. It offers exceptional performance, speed, and reliability — the complete solution for concrete inspection and structural analysis.

- Clear areas for drilling or cutting
- Locate rebar, post-tension cables, conduits
- GPR and power line detector
- Lightweight ergonomic design
- Rugged IP65 construction
- Attachable wheels and extension arm
- Markouts and cross sections using smart phone or tablet (Android or iOS)
- Advanced analysis, reporting, and cloud sharing using tablet PC



Earth Science Systems, LLC Wheat Ridge, Colorado 303-800-2000  
<https://www.earthsciencesystems.com>





# GPR Concrete Scanner

Cutting edge GPR with power line detector and steering guidance

## Fast Scans with Smartphone App

Conduct fast 2D scans and markouts using your iOS or Android smart phone or tablet.

## Advanced 3D Scans with Tablet

Create 3D interactive visualizations using tablet PC. Get the whole picture by combining surface photo, subsurface radar scans, and delineated targets.

## Scan with Guided Steering

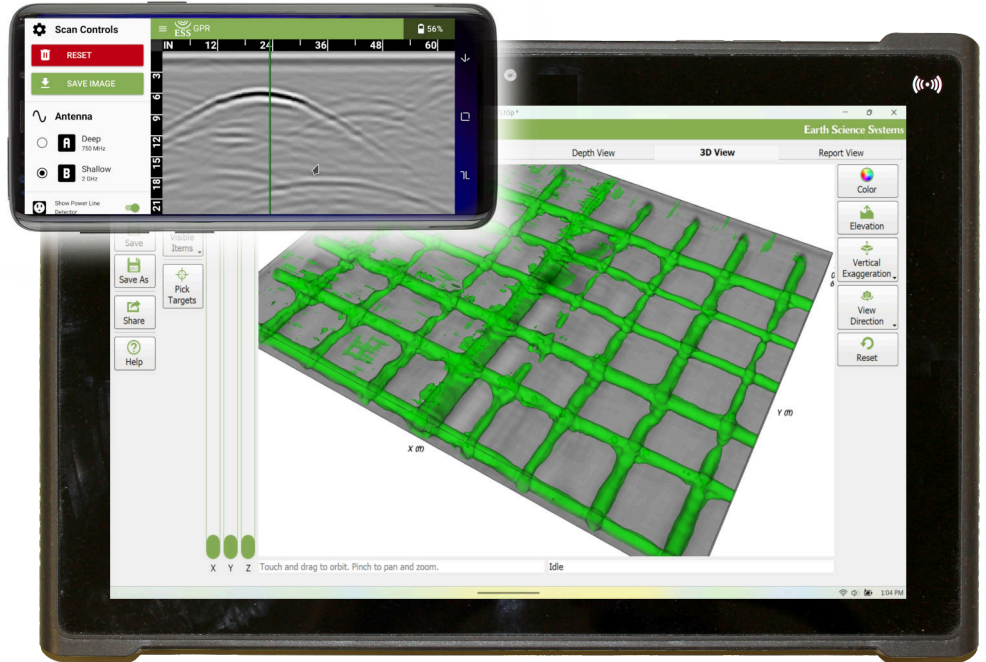
No scan mat needed. Automated tracking enables fast reconnaissance scanning or high resolution grid scans.

## Streamlined Report Generator

Quickly create reports with cross sections, depth slices, 3D views, photos, text write-ups, and target tables.

## On Site Data Analysis and Reporting

Advanced analysis and reporting software is touch friendly and runs on a tablet PC. No internet connection required. Provide fast results to clients without needing to return to office.



## Cloud Sharing

Share reports and interactive 3D views online with clients and team members. Share 3D Web View, KML/KMZ (map viewers and GIS systems), DXF (CAD), PNG (Image), and CSV (spreadsheet)

## Complete Structural Analysis System

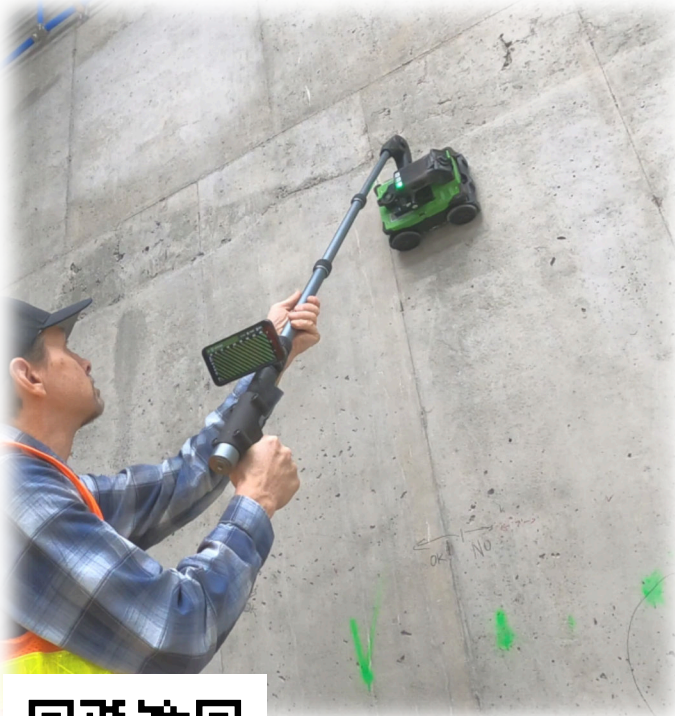
Includes everything needed to conduct a complete structural analysis or site characterization. Determine cover and thickness. Locate and identify rebar, cables, conduits, honeycombing, and voids.

## Optional Accessories

Extension pole and wheel truck for scanning floors, wall and ceilings. Rugged shipping case is recommended for frequent travel.

## Specifications

- 2 GHz bi-static radar antenna
- Magnetic field detection of active power circuits or tracer signals
- Rugged tablet PC and/or Smart phone (Android, iOS)
- WiFi-interfaced, fully cable-less operation
- Durable construction with IP65 ingress protection
- Integrated optical odometer
- Line lasers for marking and alignment
- Thumb switches for lasers and data recording
- Rechargeable 3.4Ah Lilon battery with up to 3 hours operation
- Two batteries with dual charger for all day use
- Scanner dimensions: 8.73 x 6.22 x 6.52 inches (22.8 x 15.8 x 16.6 cm)  
9.5 x 7.36 x 6.75 inches (24.1 x 18.7 x 17.1 cm) with wheel truck
- Scanner weight: 4.95 lbs. (2.25 kg) including battery (3.5 kg)  
4.0 lbs. (1.83 kg) including battery and wheel truck



Earth Science Systems, LLC Wheat Ridge, Colorado 303-800-2000

<https://www.earthsciencesystems.com>